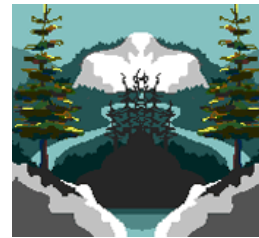
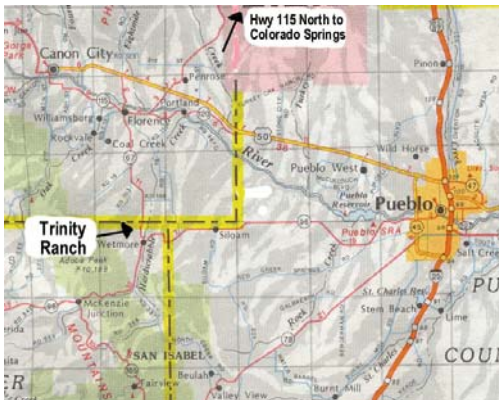


Phone (719) 561-4580 | (719) 784-2124
 Fax (719) 5566-3063
 e-mail: cip@amigo.net



Welcome to Trinity Ranch

Click on map for larger map
 image



[Home Page](#)

[Summer Camps](#) | [Camp Activities](#) | [Registration](#) |
[Regional Information](#) | [History](#) | [Camper rules](#) |
[Calendar](#)

Directions to Trinity Ranch

- From Denver and Colorado Springs, go south on Interstate 25 and take Exit 101 west toward Canon City.
- From locations south of Pueblo, go north on Interstate 25 and take Exit 101 west on Hwy 50 toward Canon City.
- From Pueblo, go west on Hwy 50 toward Canon City.

Before reaching Canon City take Exit Hwy 115 south toward Florence. Proceed to Hwy 67 (first stop light) go left toward Wetmore. About 10.5 miles south, at a large grouping of mailboxes, turn right onto the road to Trinity Ranch and County Road 290. Follow the paved road 1.1 miles to the ranch gate. At the gate, continue on the dirt road to the Epic Camp road sign. Go left at Epic Camp sign and follow the road to the camp. The lodge and parking area are 0.7 miles from the ranch gate.

- From Canon City and points west.

Travel through Canon City and continue east on Hwy 50 to the Hwy 115 Exit.

Go right (south) on HWY 115 toward Florence. Proceed to Hwy 67 (first stop light) go left toward Wetmore. About 10.5 miles south, at a large grouping of mailboxes, turn right onto the road to Trinity Ranch and County Road 290. Follow the paved road 1.1 miles to the ranch gate. At the gate, continue on the dirt road to the Epic Camp road sign. Go left at Epic Camp sign and follow the road to the camp. The lodge and parking area are 0.7 miles from the ranch gate.

- Alternative Pueblo Route

From Pueblo follow Northern Avenue west past Pueblo Boulevard. Northern Avenue becomes Hwy 96 to Wetmore. At Wetmore turn right onto Hwy 67 north (toward Florence). About 1 mile north, at a large grouping of mailboxes, turn left onto the road to Trinity Ranch and County Road 290. Follow the paved road 1.1 miles to the ranch gate. At the gate, continue on the dirt road to the Epic Camp road sign. Go left at Epic Camp sign and follow the road to the camp. The lodge and parking area are 0.7 miles from the ranch gate.